

**BIDDERS INFORMATION PACK**



MANHATTAN PLACE 27 17 ST BENEDICT ROAD  
**MODERN 3 BEDROOM APARTMENT**

AUCTION DATE Thursday, 20 August @ 14:30  
REGISTRATION From 13:30  
VENUE Online  
VIEWING By appointment

**Gary Brower**

(082) 352 5552 | [garyb@auctioninc.co.za](mailto:garyb@auctioninc.co.za)



## HOW TO BUY A PROPERTY ON AUCTION





---

## PROPERTY INFORMATION

<b>Office/Building Name:</b>	Manhattan Place
<b>Number</b>	17
<b>Street Address:</b>	St Benedict Road
<b>Suburb:</b>	Gresswold
<b>City:</b>	Johannesburg
<b>Province:</b>	Gauteng
<b>Sector:</b>	Residential
<b>Sub Sector:</b>	Apartment
<b>Co-Ordinates:</b>	Latitude: -26.1321 Longitude: 28.0862
<b>Title Deed</b>	ST57778/2016
<b>Erf Number</b>	Door 27 Unit 27 of 1190/2008 ss Manhattan Place Gresswold



## PROPERTY DETAILS

### Property Description

This modern, lock up and go unit is very neat with 3 bedrooms, 2 baths, a Guest Loo and a lounge leading to the balcony. The kitchen is also open-plan and has a built-in stove. There is one carport for the unit and the complex has a swimming pool and 24hr security. Conveniently located just minutes away from Balfour Mall, Melrose Arch, Sandton and with easy access to major highways.

### Features

- 3 Bedrooms
- 2 Bathrooms
- Guest loo
- Carport
- Swimming Pool



---

## AREA ASSESSMENT

### Area Description

Gresswold, located of North of Johannesburg, an area comprising of commercial and residential property. Gresswold lays claim to numerous commercial properties such as office blocks and office parks. Residential property in Gresswold is exceptional offering spacious houses, apartments, and townhouses. The area provides property solutions for investors, owner occupiers and tenants offering plenty of property to let in Gresswold and plenty of property for sale in Gresswold. A multitude of road networks contribute to the success of Gresswold, situated just off the M1, Gresswold can be accessed using the Corlett Drive via the M1 North and South. Arterial routes such as Corlett Drive, Oxford Road and Louis Botha Avenue ensures convenient commuting to Sandton, Rosebank, Melrose Arch and Houghton. Another contributing factor to the success of Gresswold is the closeness to all local amenities and neighbouring areas. Gresswold proximate distance to major shopping centres, hospitals, leisure and recreational venues ensure convenience when running errands or when deciding to enjoy life's pleasures.

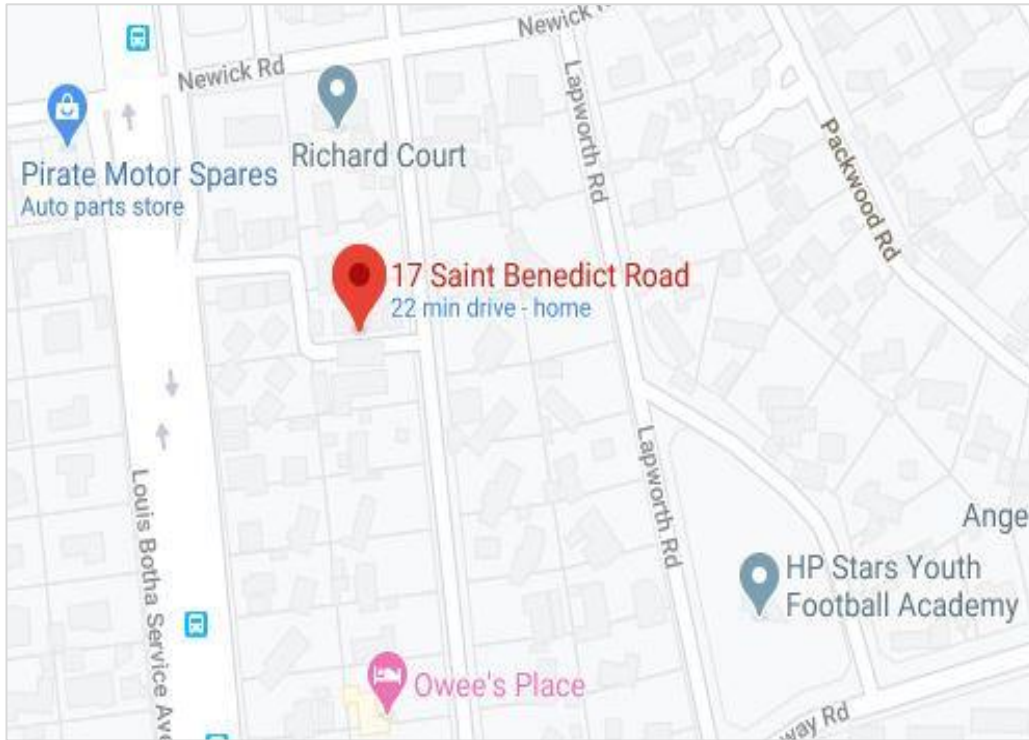
### Amenities

Balfour Park	0,5Km
Norwood Mall	2,6Km
Melrose Arch	2,6Km

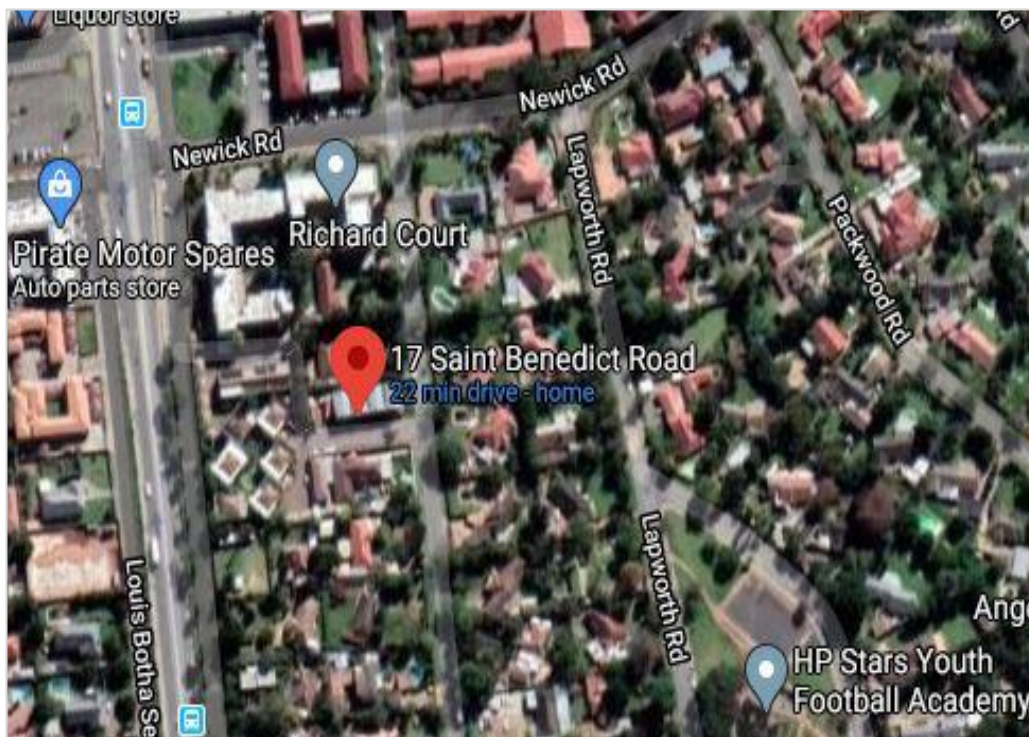


## PROPERTY MAPS

### Map



### Satellite





## PROPERTY PHOTOS





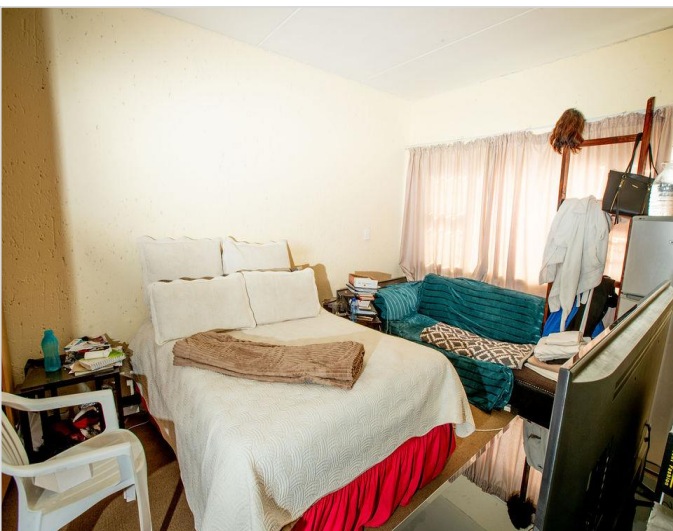
## PROPERTY PHOTOS







## PROPERTY PHOTOS



## CONTACT DETAILS

### AuctionInc

Address 1st Floor Masingita House, 41 West Street, Houghton Estate

Email [info@auctioninc.co.za](mailto:info@auctioninc.co.za) | Tel +27 11 268 2681

### Property Broker

Gary Brower  
(082) 352 5552  
[garyb@auctioninc.co.za](mailto:garyb@auctioninc.co.za)

